



ELECTRIC OTTOMAN USER MANUAL

The TEMPUR® Electric Ottoman strikes a perfect balance in convenience - combining storage space and ease of use.

SAFETY INSTRUCTIONS

1. **People with heart pacemakers must not use the electric ottoman unit, as the unit may possibly affect the pacemaker.**
2. **Never open the housing of the controls and motors - doing so will void your warranty.**
3. **Check that the cables and housings are not damaged, if this is the case do not use the electric ottoman and contact your dealer.**
4. **Any repairs must be approved prior to works being undertaken otherwise you could void your warranty.**
5. **When the mechanism is in use please do not sit directly on or apply pressure to any raised section of the bed base. Your bed base must always be returned to the horizontal position before getting into or out of the bed.**
6. **Do not allow liquids to get into controls or motors.**
7. **Do not look directly into the torch and the LED light.**
8. **The electric ottoman unit is designed for use in enclosed dry living areas.**
9. **Please ensure that children do not play with the remote control - keep the remote control out of reach of children.**
10. **When moving the electric ottoman bed base please make sure that all wires are secured off the floor to prevent damage.**

The system is only allowed to be used in beds, slatted bed frames and/or box spring beds for the purpose of raising and lowering the lid section.

The system is not approved for use

- in healthcare areas and facilities (e.g. hospital, rest home, nursing home etc.)
- as a lifting device for heavy loads etc.
- for all other forms of use that are not in line with the appropriate application.

Setup of the Ottoman Finishings



Metal chrome castor



Headboard bolt



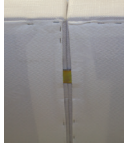
Linking Bar



Butterfly Bolts



U-clip



U-clips attached to lid



Wooden spacer

Pack contents (Single Base):

- 4 x Castors
- 4 x Headboard bolts (if headboard ordered)
- 4 x Wooden spacers (if headboard ordered)

Pack contents (Two Bases):

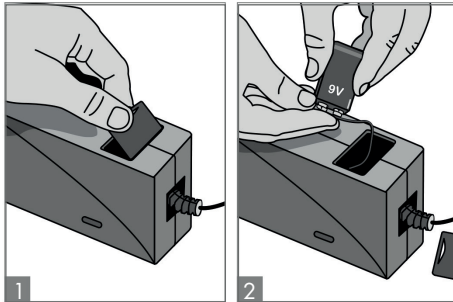
- 8 x Castors
- 4 x Headboard bolts (if headboard ordered)
- 2 x U-clip
- 2 x Linking Bar
- 4 x Butterfly bolts
- 8 x Wooden spacers (if headboard ordered)

Assembly instructions:

1. Insert each of the supplied castors into the holes in each corner of the underside of your ottoman base(s).
2. Attach headboard (if ordered) using the supplied headboard bolts and wooden spacers.
3. If you have purchased a double, king or super king, you will need to affix the supplied U-clips onto the underside of the lid (2 x clips) of the ottoman to ensure the bases do not separate.
4. If you have purchased a double, king or super king, affix the linking bars to each of the bed bases using the supplied butterfly bolts (2 x bolts per linking bar) to ensure that your bases do not separate. Please note that you may need to pierce the fabric of the bed base once you have determined the fixing points for the butterfly bolts.

Inserting battery into power supply for backup

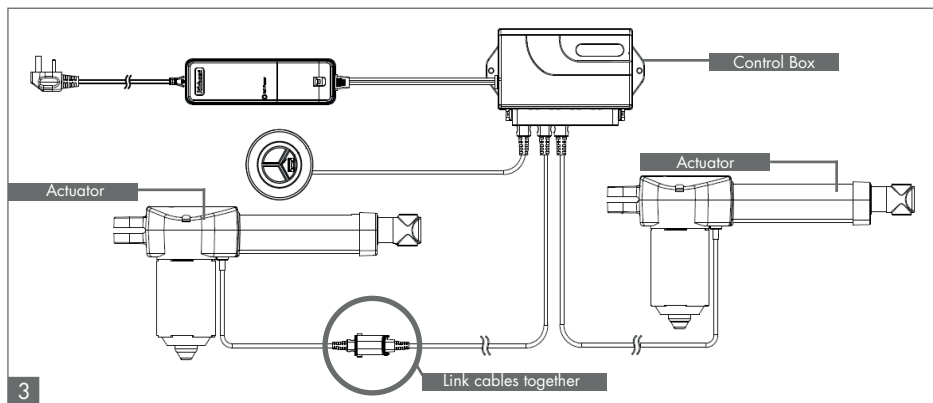
1. Remove the battery compartment cover on the power supply (illustration 1).
2. Insert 9V battery into the battery compartment (illustration 2).



Connecting both motors (Split bases only)

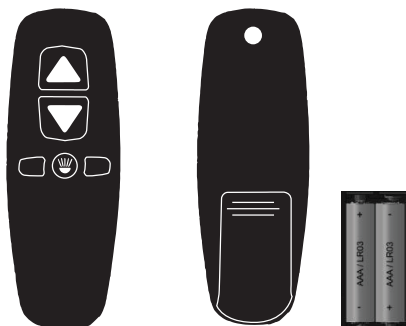
The motors, control box, gas struts and wires will all be pre-configured. Minimal setup is required per the following steps:

1. On the bed base without the control box - which should be on the right hand side as you look at the bed base from the foot-end - take the wire leading from the actuator (see illustration 3 below) and thread through the hole in the bed base.
2. On the bed base with the control box - which should be on the left hand side as you look at the bed base from the foot-end - take the wire leading from the actuator and push this through the hole in the bed base.
3. Link the two cables together underneath the bed base. Do note that there is a strain relief cover which needs to be flipped out in order to join the cables together. Once joined, return the strain relief cover to the original position to lock the cables together.



Inserting batteries into remote / exchanging the batteries

1. Remove the battery compartment cover on the rear of the remote.
2. Insert 2 AAA batteries supplied into the battery compartment.






Pairing the remote

The remote may need to be paired with the control box in order to operate the electric ottoman prior to first use. This is a straightforward process following the below steps. Do note: the electric ottoman will need to be tested with the mattress in position.

1. Plug the mains cable into a UK power socket (make sure power is off before doing this).
2. Turn on the mains power and press the Up & Down buttons together on the remote handset and the 'learn' button on the control box at the same time.
3. The control box will beep once to indicate pairing is successful.
4. Check the switch by pressing the up and down buttons - the lid should start to move.

Using the remote

To operate your electric ottoman bed base using your remote, use the buttons on the handset as illustrated below.

BUTTON	FUNCTION
	Lift up the electric ottoman lid
	Close the electric ottoman lid
	Turn on/off torch on rear of remote

Manual operation using buttons

On the side of your bed, you will find manual buttons to control the electric ottoman lid. One button will raise the electric ottoman lid, whilst the other will lower the electric ottoman lid. In addition to these buttons, you will also find a USB port for charging devices (e.g. phones or tablets).

